



## FLOOR PLAN

VILLA 03

*elysian*  
ELEVATED BEACH LIFE

## ABOUT THE DEVELOPMENT

Located at 185 Old Burleigh Road, Broadbeach, *elysian* offers exceptional beachfront and hinterland views from each of its 65 apartments.

Limited to only 3 Beachfront Villas, *elysian* stands as a tribute to harmonious aesthetics inspired by its natural surroundings and urban conveniences. From the masterfully finished interiors, through to a virtual concierge and very latest in automated underground car parking, everything has been designed to connect you to the *elysian* way, elevated beyond anything of this world.

### APARTMENT FINISHES

- Built-in SMEG appliances
- Modern-luxe styling that features premium imported stone on the benchtop and splashback
- Engineered timber flooring throughout living and dining
- Feature pendant lights
- Bespoke tapware

### VILLA FEATURES

- Spread over 3 levels
- Private Courtyard with direct street access
- Additional entrance on Level 1 with direct access to external storage facilities
- Entertainers kitchen with butlers pantry
- Master bedroom with dual vanity in ensuite, free-standing bath & double sided walk in robe
- Full-height glazing
- Internal storage
- Separate laundry room
- Study / multi purpose room on ground level

### BUILDING FACILITIES

- Sauna Room
- Dining Area
- Swimming Pool
- Gymnasium / Yoga Studio
- Washroom and Lavatory
- Carparking System
- My Butler Virtual Concierge

[ELYSIANBROADBEACH.COM.AU](https://elysianbroadbeach.com.au)

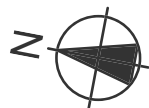
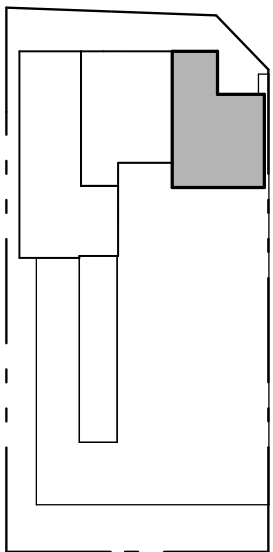
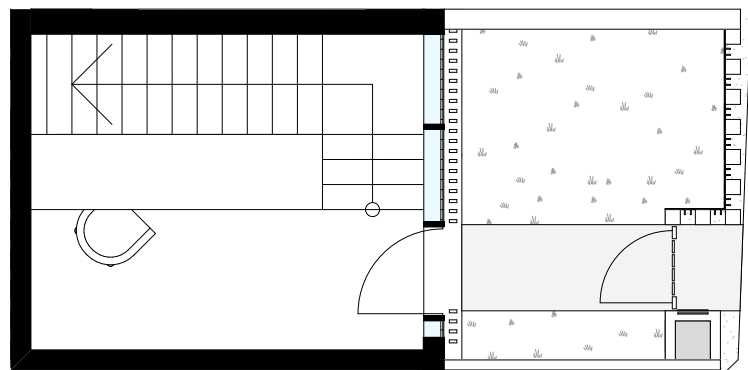
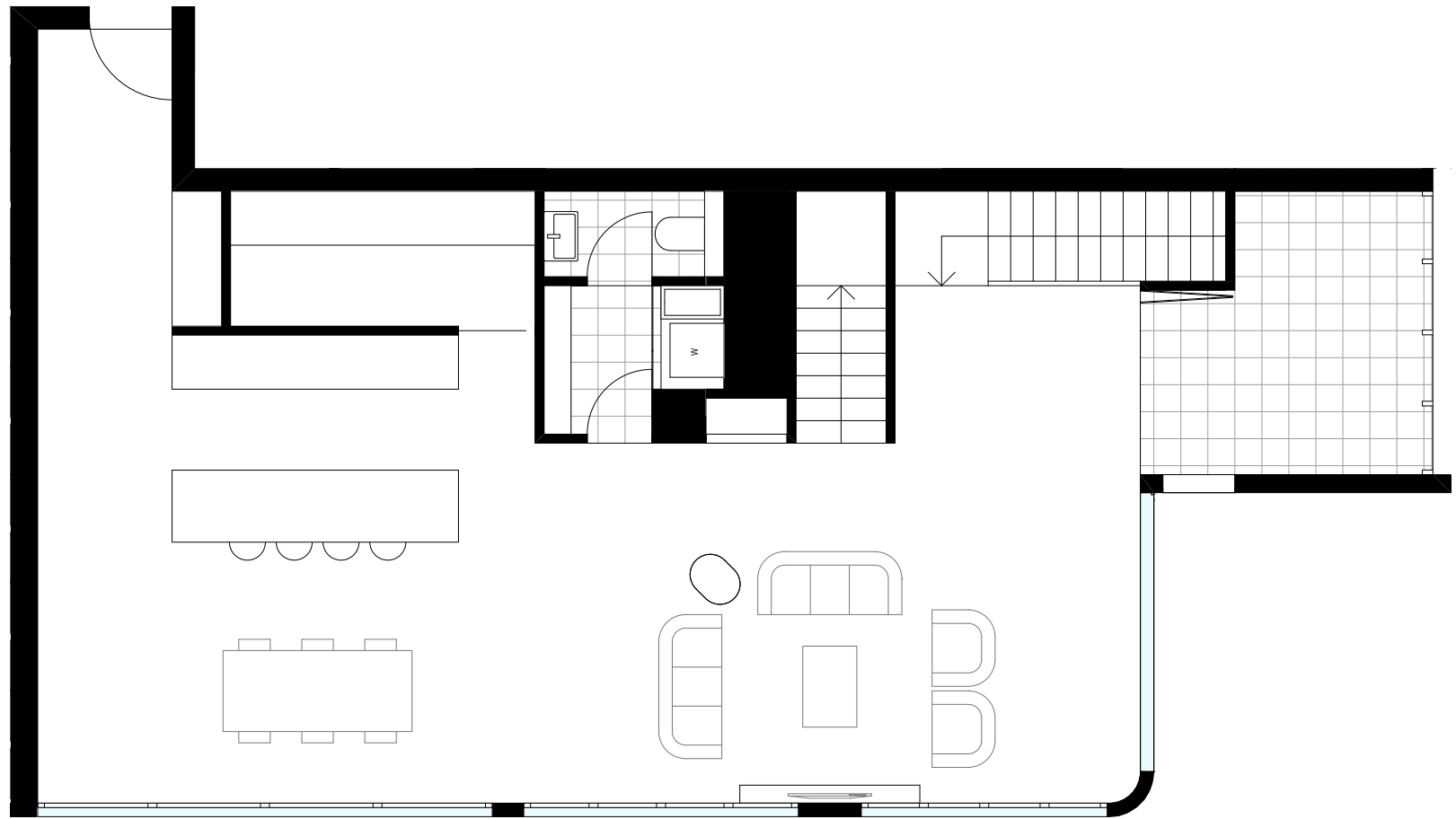
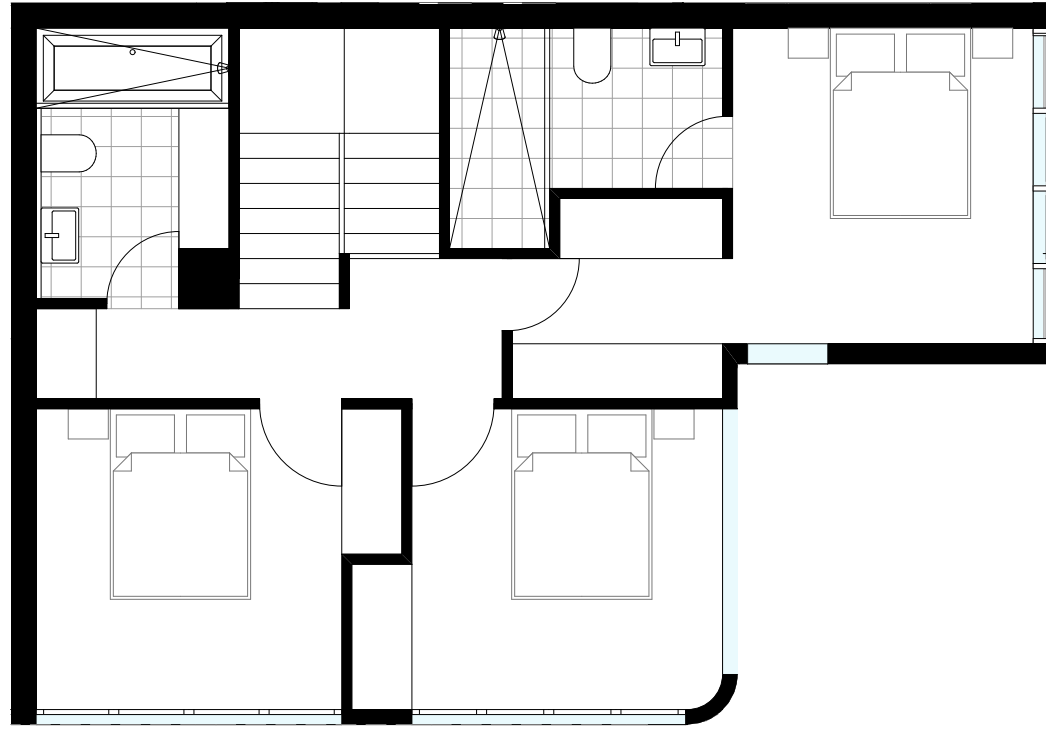
185 OLD BURLEIGH ROAD, BROADBEACH | 1300 135 550 | [LIVE@ELYSIANBROADBEACH.COM.AU](mailto:LIVE@ELYSIANBROADBEACH.COM.AU)

*elysian* is not yet built and aspects of the design may change. This document reflects the Developer's current intentions only and the final product may differ from that depicted in this document due to regulatory, design, engineering and other reasons. Buyers should refer to the final disclosure document and contract documentation. The content of this document is correct to the best of the Developer's knowledge, but no warranty is given or representation made that it is accurate or complete.

# INDICATIVE FLOOR PLAN

3 | 2.5 | 2

VILLA 03  
INTERNAL AREA 155m<sup>2</sup>  
EXTERNAL AREA 8m<sup>2</sup>  
EXCLUSIVE USE AREA 8m<sup>2</sup>  
TOTAL AREA 171m<sup>2</sup>



*elysian*  
ELEVATED BEACH LIFE

SPYRE  
GROUP

IMPORTANT PLEASE READ CAREFULLY. All dimensions, floor areas, fittings, specifications, floor finishes, images and diagrams are indicative only and subject to change without notice. Furnishings, accessories and whitegoods not included. Finished product may differ from that depicted. Interested persons should carefully check plans in the contract and associated documents and make their own enquiries and rely on their own investigations and advice.